

MRMCC Chair's Report

Dec. 1, 2023

Jono Miller

Since our last meeting: August 11th

**OLPH Retreat Center Permit
Resilient SRQ
Snook Haven
Meeting with DEP Ft. Myers Permitting
Meeting with DEP Secretary Hamilton
Contact county commission re: Waterfalls of Venice
River Road Pine Die Off
Water Supply River Crossing
County Acquisition Efforts
Permitting (1700 & Cope)
Alligators
Hunting on Pinelands Reserve
Fossiling on/in the Myakka**

**Waterfalls of Venice
National W&S River Partnership**



OLPH Retreat Center Permit
July 24, 2020



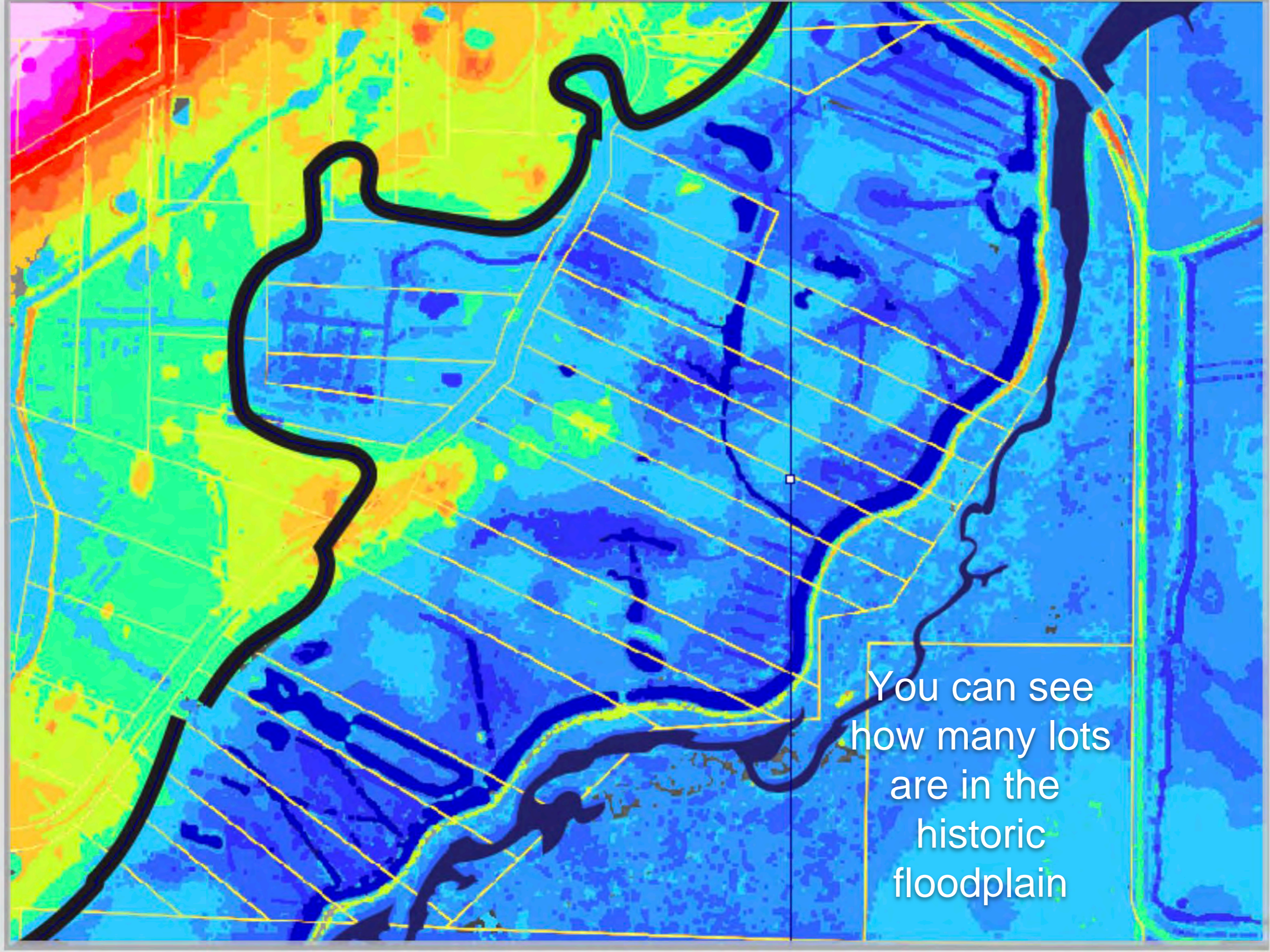
Levee Issues

The Resilient SRQ (Community Development Block Grant – Disaster Recovery) Action Plan was approved on November 21, 2023, by the U. S. Department of Housing and Urban Development. This approves the preliminary plan for use of the \$201.5 million Sarasota County received for the long-term recovery efforts from Hurricane Ian.

submitted by Jono Miller

941-320-3846

jonosarasota@gmail.com



You can see
how many lots
are in the
historic
floodplain

More information about open application periods, eligibility criteria, active solicitations, and other requirements will be posted at scgov.net/ResilientSRQ as soon as it becomes available.



SNOOK HAVEN



SNOOK HAVEN

FT. MYERS DEP PERMITTING

.....funding for our guidance document that would explain in lay terms that would explain the various requirements of shoreline permitting on the W&S stretch of the Myakka. My understanding is **your staff will come up with a draft outline** and then I can take that to a local attorney to generate a proposed budget. Then we can approach CHNEP and local Sarasota foundations for funding.

You'll have to explore the process by which DEP legal staff could get comfortable with the work product. I suspect it will primarily exist online, but should be formatted to facilitate printing hard copies if needed.

PERMITTING

November 23, 2021



© LIVE

May 28, 2022



Allison Moran with Sarasota County reports "they are working on a planting plan at the moment. Once they finalize that, I will review it and once approved, they will manually remove the rock and all unauthorized material in stages, planting as they go, to minimize erosion. Once all rock has been removed and the shoreline is planted, the enforcement case will become a monitoring case for 3 years to ensure it meets our success criteria."

COPE PERMIT

MAYAKA RIVER

SITE:
897 Brentwood Dr.
Venice, FL.



COPE PERMIT

Not on Curry Creek

No MHWL at this location

Use of Safe Upland Line

MHWL confusion

Does not qualify for an exemption

"I support Mr. Cope's goal to retard riverbank erosion. I would encourage all involved to propose solutions likely to meet the requirement of all permitting agencies to avoid unnecessary delays and expense related to modifications required to comply with other requirements."



RIVER ROAD PINE DIE-OFF



RIVER ROAD PINE DIE-OFF



RIVER ROAD PINE DIE-OFF



RIVER ROAD PINE DIE-OFF

Meeting w DEP Secretary Hamilton

Legal requirement and need for
carrying capacity study

Promised conceptual master plan
for MRSP

Homeowners Guide to Regulatory Requirements

Chaired discussion with MRSP

Florida Statute 258.501

Periodic studies to determine the quantity and mixture of recreation and other public uses which can be permitted without adverse impact on the resource values of the river area.

Accomplishments and Objectives

carrying capacity

Recreational Management Program		Measure	Planning Period	Estimated Manpower and Expense Cost (10-years)
Objective A	Improve the visitor experience in the main use areas.	# Facilities/ miles of Road/study completed	UFN	\$557,000
Action 1	Seek funding and partnerships to conduct a recreational carrying capacity study for the Myakka River,	Study completed	UFN	\$250,000
Action 2	Develop a conceptual master plan for the park.	Document completed	ST	\$5,000

Meeting w DEP Secretary Hamilton

Shared levees with MRSP

Federal W&S Partnership

Recreational Alligator Harvest

USFWS

▼ Find address or place 🔍

Hidden River subdivision

Myakka River State Park

Pump
Facility



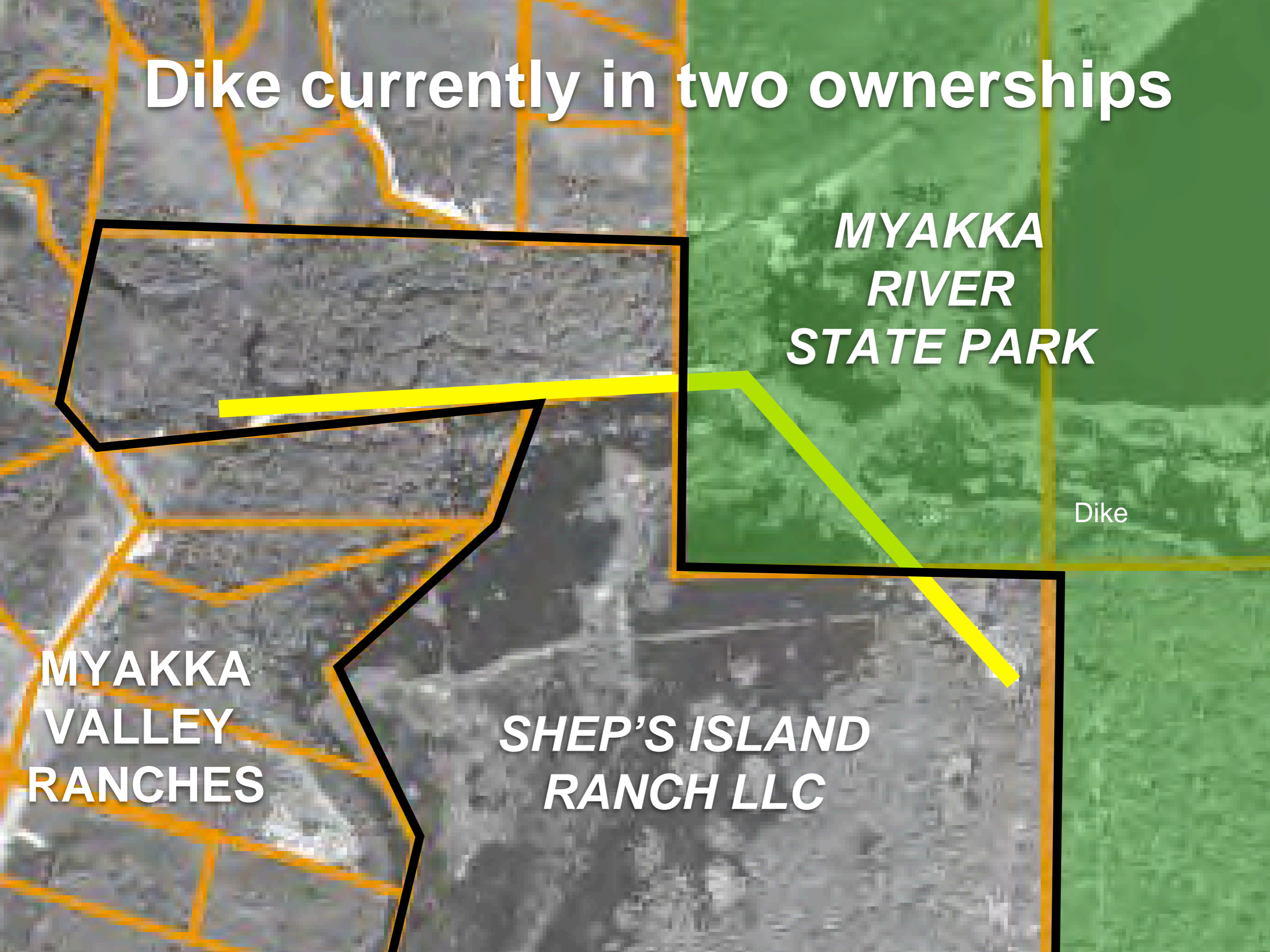
Dike currently in two ownerships

*MYAKKA
RIVER
STATE PARK*

Dike

*MYAKKA
VALLEY
RANCHES*

*SHEP'S ISLAND
RANCH LLC*



ALLIGATORS

Show 10 entries

Search:

CSV EXPORT

Year	Area Name	Carcass Size	Harvest Date	Location
2019	SARASOTA COUNTY	9 ft. 9 in.	08/24/2019	DEER PRAIRIE CREEK
2019	SARASOTA COUNTY	9 ft. 2 in.	10/06/2019	
2019	SARASOTA COUNTY	7 ft. 6 in.	09/25/2019	BIG SLOUGH
2019	SARASOTA COUNTY	7 ft. 0 in.	09/11/2019	
2019	SARASOTA COUNTY	6 ft. 11 in.	10/19/2019	
2019	SARASOTA COUNTY	6 ft. 0 in.	10/08/2019	
2019	SARASOTA COUNTY	12 ft. 2 in.	10/26/2019	
2019	SARASOTA COUNTY	11 ft. 2 in.	09/29/2019	LOWER MYAKKA LAKE
2019	SARASOTA COUNTY	10 ft. 8 in.	10/05/2019	LOWER MYAKKA LAKE

Showing 1 to 9 of 9 entries

LOWER MYAKKA LAKE

LOWER MYAKKA LAKE

~~ALLIGATORS~~

CROCODILE!



American Crocodile Photo taken "near Border Road" on the Myakka River
Photo taken 2021. Photographer unknown at this time.

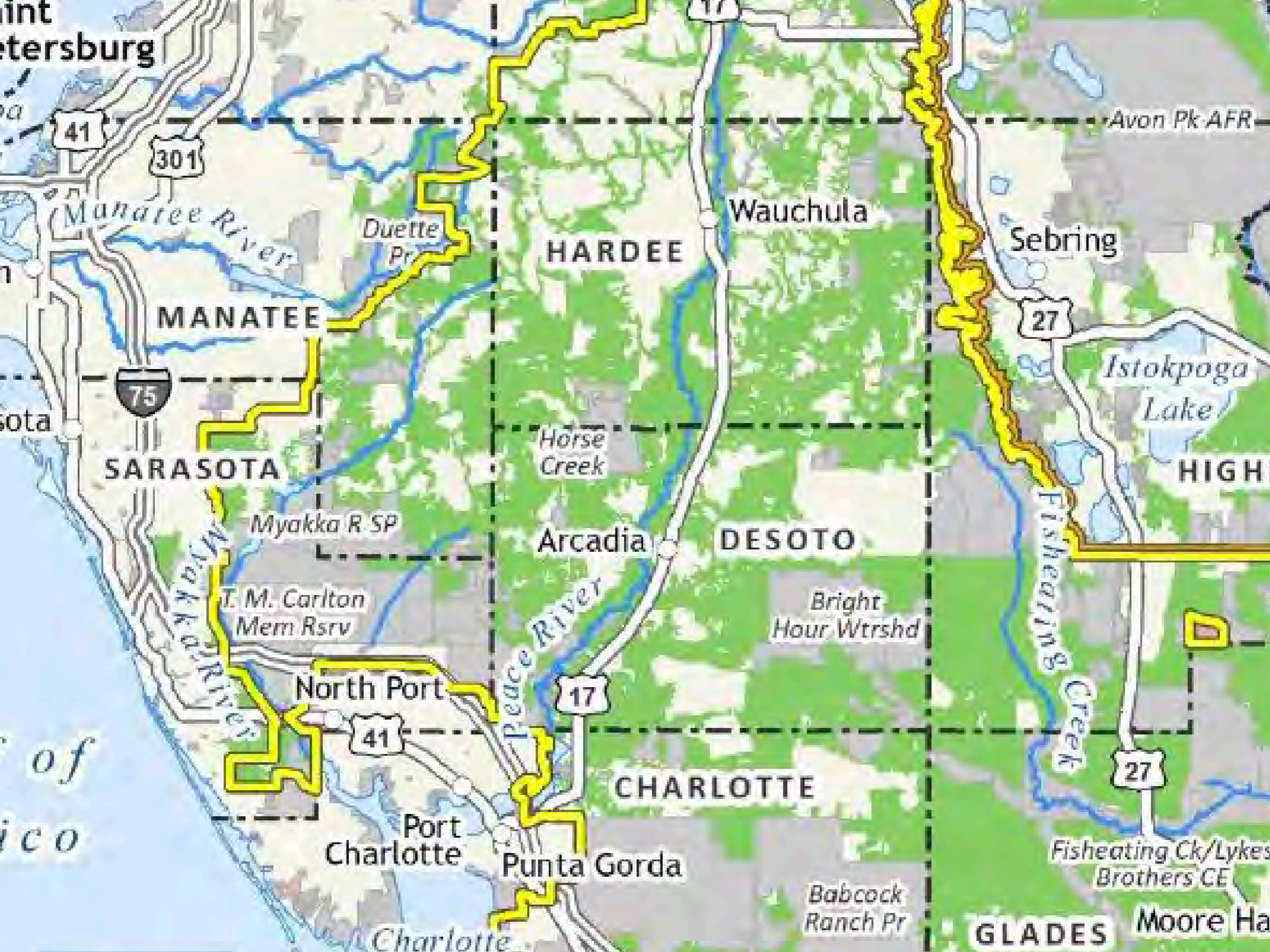
~~ALLIGATORS~~

CROCODILE!



American Crocodile in the Myakka River in Charlotte County.

Biologists with the Florida Fish and Wildlife Conservation Commission were surprised to find this croc so far north.
Credit: ReAnna Montwheler, Florida Fish & Wildlife Conservation Commission



nt
etersburg

Avon Pk AFR

41

301

Manatee River

Duette Pr

Wauchula

Sebring

MANATEE

HARDEE

27

Istokpoga Lake

sota

75

SARASOTA

Horse Creek

HIGH

Myakka R SP

Arcadia

DESOTO

Bright Hour Wtrshd

T. M. Carlton Mem Rsrv

North Port

17

Fisheaming's Creek

of

41

CHARLOTTE

ico

Port Charlotte

Punta Gorda

Fisheating Ck/Lykes Brothers CE

Babcock Ranch Pr

GLADES

Moore Ha

Charlotte



75

SARASOTA

Horse Creek

Myakka R SP

Arcadia

Myakka River

T. M. Carlton Mem Rsrv

Peace River

North Port

17

41

Port

of

CO

CH

The public will be able to review possible impacts and alternatives to the proposal. Details, including information on public meetings, will be posted online at: <https://www.fws.gov/project/everglade-to-gulfconservation-area>.

The proposal, including the draft Land Protection Plan, Environmental Assessment and Conceptual Management Plan are now available. An announcement regarding the date and location for public meetings will be made soon.

All interested parties have the opportunity to participate and provide comments during the open 30-day comment period.

*Please submit comments to: southeast_fws_planning@fws.gov or
NWRS E2G CA, P.O. Box
700188, Wabasso, FL 32970.*

Sarasota County Environmental Land Protection Efforts

Myakka Watershed

662 acres Longino Ranch CE Due Diligence

5.06 acres Morgan Property

86.58 acres Oak Cathedral In Negotiations

211.8 acres Eastern Ranchlands CE In Negotiations

7.86 acres Nona Spring In Negotiations

671.5 acres Howard Creek Fee & CE In Negotiations

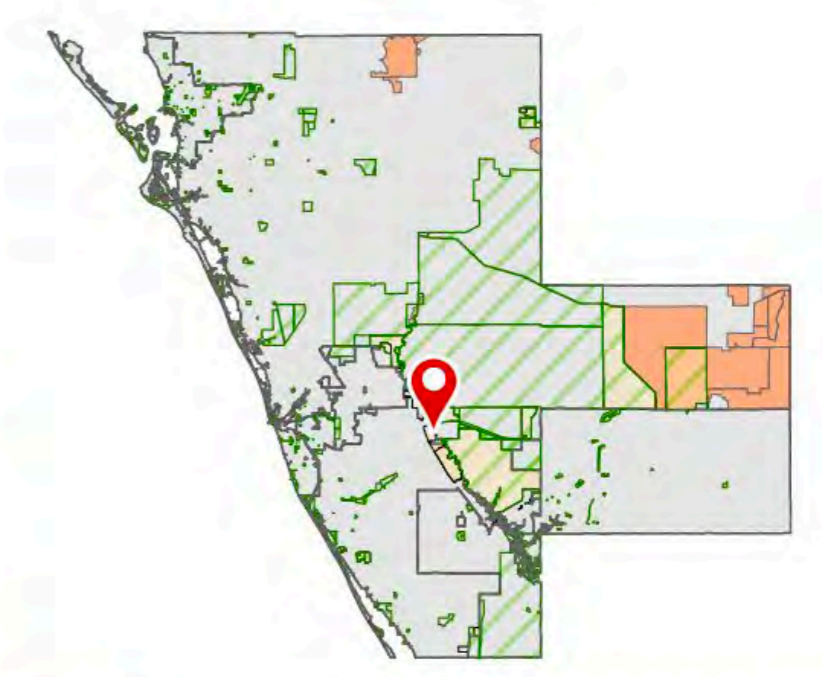
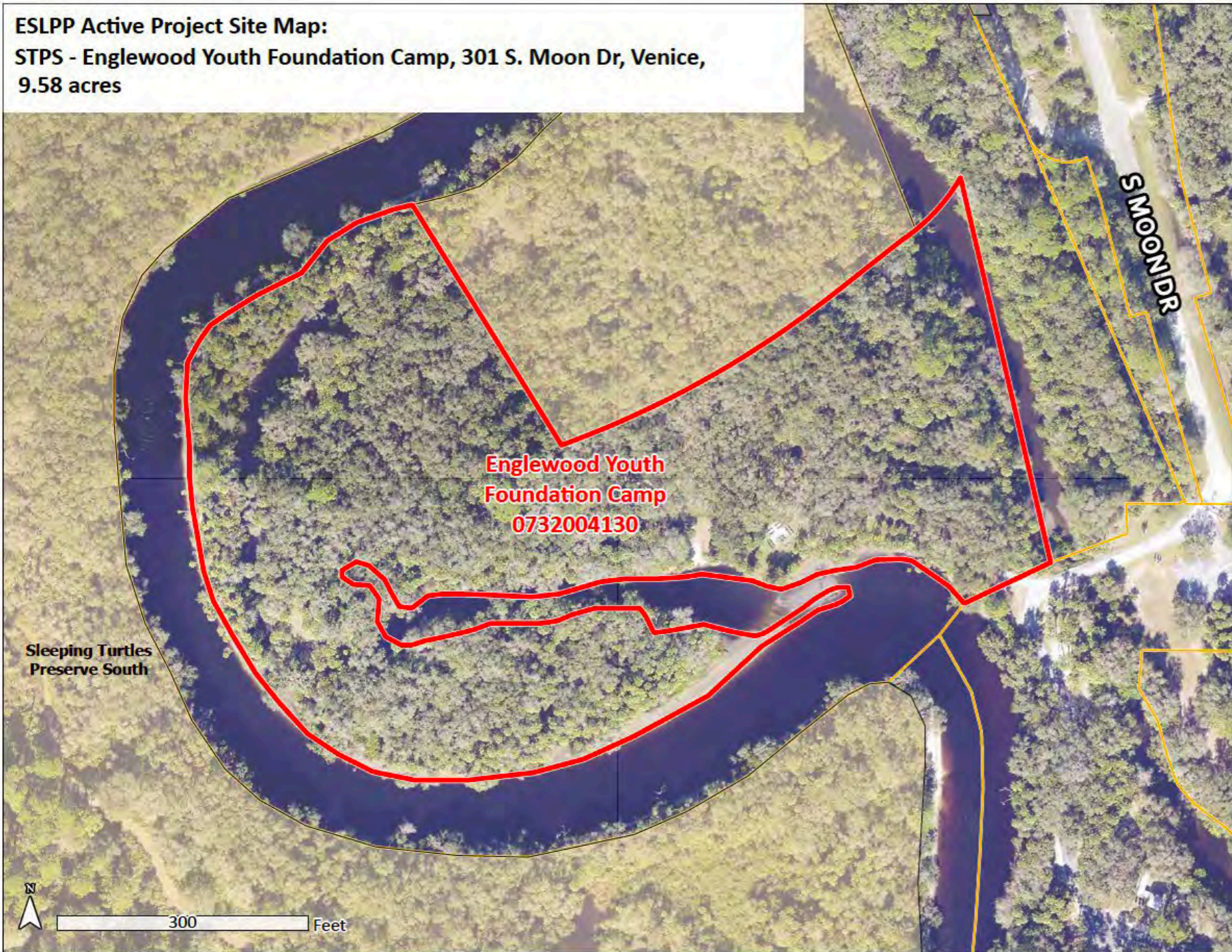
Along the River

9.58 acres Englewood Youth Foundation In Negotiation

8.96 acres Pattison In Negotiations

4.92 acres Rohlwing In Negotiations

ENGLEWOOD YOUTH FOUNDATION 9.58 ACRES



Parcel ID: 0732004130
 Status as of August 2023:
 Under Review by Staff -
 Appraisal Phase

- ESLPP Land Acquisition
- Parcels
- Sarasota County Boundary
- Parks
- ESLPP Acquired Properties
- ESLPP Conservation Easements

- Paddle Trail
- ESLPP Land Acquisition Parcels

Data Sources: Sarasota County Parks, Recreation and Natural Resources, Florida Department Of Transportation, University of South Florida, Sarasota County GIS, FDEP, Esri, HERE, Garmin, SafeGraph, GeoTechnologies, Inc, METI/NASA, USGS, EPA, NPS, US Census Bureau, USDA. This map is for informational purposes only. The County does not warranty, guarantee, or assume responsibility for geographic information completeness and/or accuracy. The map should not be used as a guide for navigation.

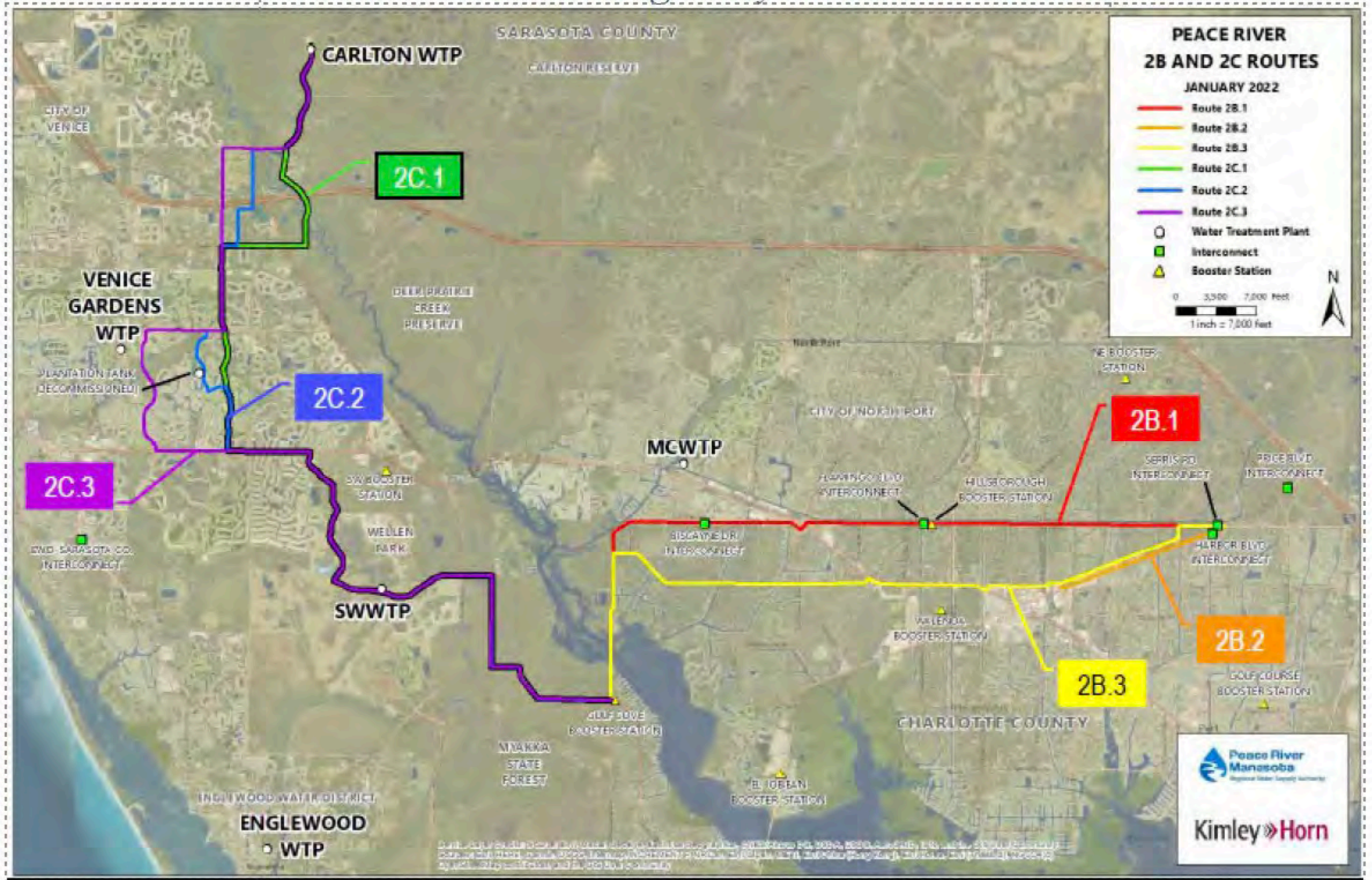
**ESLPP Active Project Site Map:
STPS - Pattison Property, 4020 E. Venice Ave.,
8.96 acres**



REGIONAL INTEGRATED LOOP PIPELINE PHASE 2B, ENVIRONMENTAL CONSIDERATIONS REPORT

occurred to the greatest extent practicable v

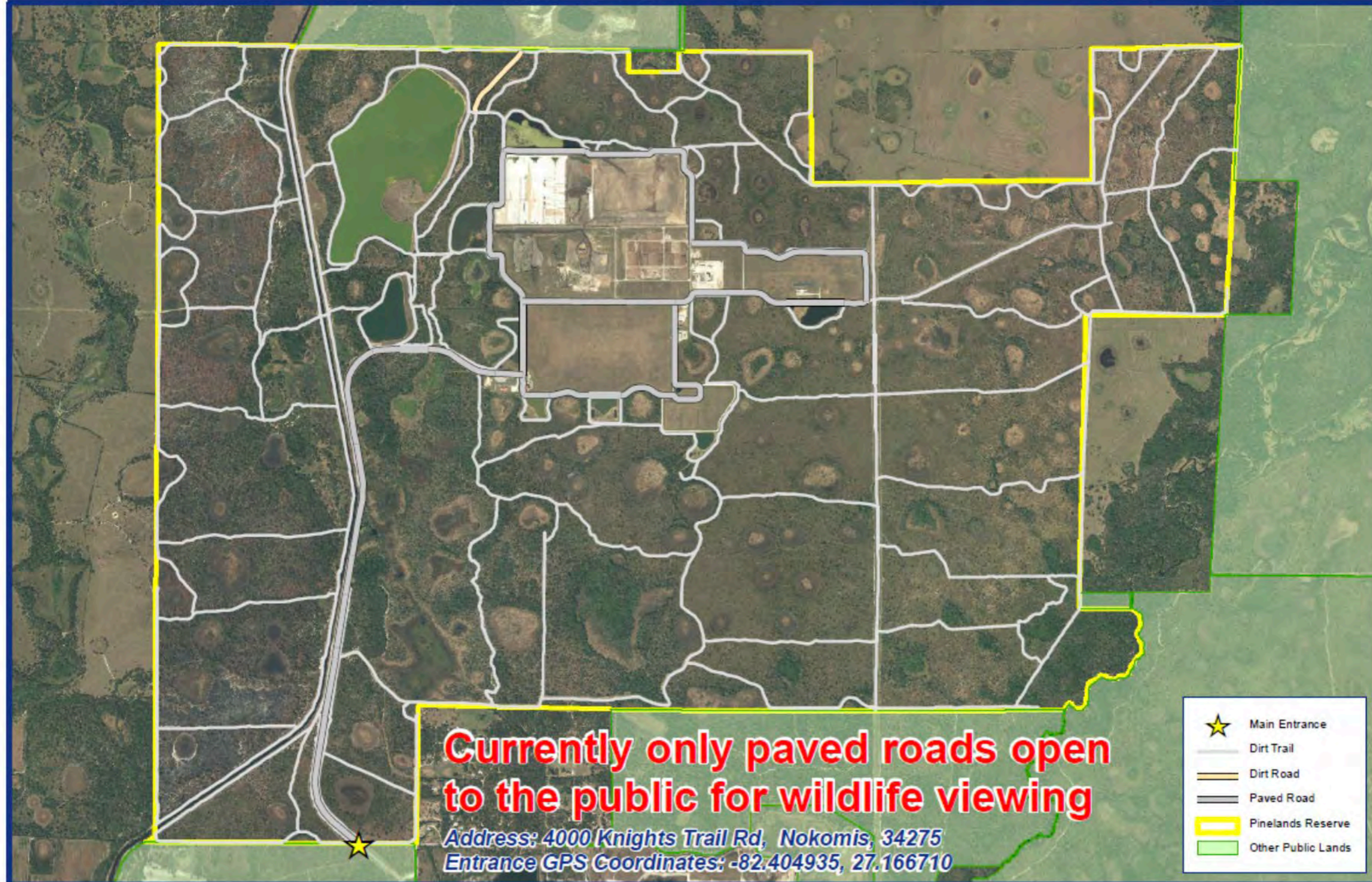
Exhibit 1. 2022 Routing Study Alternative Routes



REGIONAL INTEGRATED LOOP PIPELINE PHASE 2B,
ENVIRONMENTAL CONSIDERATIONS REPORT











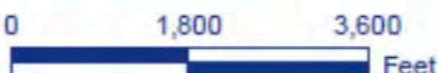


Currently only paved roads open to the public for wildlife viewing

Address: 4000 Knights Trail Rd, Nokomis, 34275
Entrance GPS Coordinates: -82.404935, 27.166710

-  Main Entrance
-  Dirt Trail
-  Dirt Road
-  Paved Road
-  Pinelands Reserve
-  Other Public Lands

Pinelands Reserve



This map is produced by Sarasota County Resource Management and is representative information only. The County does not warrant, guarantee, or assume any responsibility for geographic information completeness and/or accuracy. The map should not be used to guide to navigation.



FLORIDA
MUSEUM.®

One of the most impacted of these is the Myakka River and its tributaries and we have been advised to take immediate action to protect not only sensitive environmental and archaeological sites, but also our fossil collecting community from inadvertently breaking the law. As such, the Florida

Fossil Permit no longer covers the Myakka River and its tributaries. The FWCLE will be enforcing this shut down.

End of Chair's report